

GINGER_4 gambe metallo

Design Nello Palomba, Antony Filips



La **sedia Ginger con gambe in metallo** è la sedia imbottita dallo stile classico reinterpretato in chiave moderna con un occhio di riguardo per il **comfort** e la **funzionalità**.

Eleganza e comfort si fondono nella sedia Ginger. Il design classico, rivisitato in chiave moderna con un basamento in metallo, la rende adatta a qualsiasi ambiente. L'ampia scelta di rivestimenti e la struttura robusta la rendono una seduta versatile, perfetta per rilassarsi o per lavorare. Un tocco di raffinatezza per ogni spazio.

L'**elegante basamento con gambe in metallo** assicura **stabilità** e **robustezza** alla sedia, garantendone una lunga durata nel tempo. Le linee essenziali del basamento si fondono armoniosamente con le forme classiche della seduta, creando un **insieme raffinato** ed equilibrato.

La gamba in metallo girevole o fissa assicurano una valida alternativa estetica alla poltroncina regalando un'immagine di grande leggerezza.

Disponibile in **ecopelle**, **tessuto** e **pelle**, la sedia imbottita classica offre un'ampia scelta di colori e finiture per soddisfare ogni gusto ed esigenza d'arredo.

Disponibile anche nella versione GINGER con gambe in legno.

The Ginger chair with metal legs is an upholstered chair with a classic style reinterpreted in a modern key, with a focus on comfort and functionality.

Elegance and comfort come together in the Ginger chair. The classic design, reimagined with a modern metal base, makes it suitable for any environment. The wide choice of upholstery options and the robust structure make it a versatile seat, perfect for relaxing or working. A touch of refinement for any space.

The elegant metal leg base ensures stability and durability, guaranteeing the chair's longevity.

The essential lines of the base blend harmoniously with the classic shapes of the seat, creating a refined and balanced ensemble.

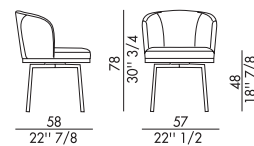
eforma
DESIGN ITALIANO

The option of a swivel or fixed metal leg provides an aesthetically pleasing alternative to the armchair, offering an image of great lightness.

Available in eco-leather, fabric, and leather, the classic upholstered chair offers a wide range of colors and finishes to suit every taste and furnishing need.

Also available in the GINGER version with wooden legs.

Informazioni tecniche / Technical informations



Poltroncina imbottita fissa o girevole con gambe in metallo verniciato o cromato.

Nero	V01	Titanio	V04	Cromo	CRO
Antracite	V03	Bronzo	V05	Cromo nero	CRN
Avorio	V08	Oro	V06		

Rivestimento non sfoderabile.

 H 140 cm x L 140 cm  2,50 m²

Upholstered armchair with fix and swivel legs in metal painted or chromed.

Black	V01	Titanium	V04	Chrome	CRO
Anthracite	V03	Bronze	V05	Black chrome	CRN
Ivory	V08	Gold	V06		

Cover not removable.

 H 140 cm x L 140 cm  2,50 m²

FINITURE/FINISHES

Attenzione: il prodotto finito può presentare delle lievi variazioni di colore rispetto ai campioni forniti dall'azienda. I colori visualizzati sono puramente indicativi e possono variare rispetto alla realtà. Rivolgersi ad EFORMA o al proprio rivenditore di fiducia per ricevere maggiori informazioni. EFORMA si riserva di apportare modifiche e/o migliorie di carattere tecnico ed estetico ai propri modelli e prodotti in qualsiasi momento e senza preavviso. / *Attention: the final product may show slight variations in colour compared to the samples supplied by the company. The colours displayed are indicative and can vary in reality. Please contact EFORMA or your preferred retailer for more information. EFORMA reserves the right to change and/or apply technical and esthetical improvements to its models and products at any time without any notice.*

Metallo/Metal

I metalli della nostra collezione vengono verniciati a polvere così da rivestire le nostre superfici a scopo decorativo e protettivo. Lo spessore finale della verniciatura a polveri, risulta particolarmente elevata contribuendo ad una serie di rilevanti vantaggi sul prodotto verniciato: resistenza meccanica, resistenza agli agenti corrosivi, scarsa infiammabilità, precisione nell'applicazione. Le verniciature a polveri utilizzate sono totalmente atossiche e prive di solventi, per questo motivo la verniciatura a polveri è una lavorazione ECO-FRIENDLY, a bassissimo impatto ambientale. Disponibile la versione cromata dove il metallo o l'alluminio vengono rivestiti di cromo, conferendogli così durezza, resistenza chimica e resistenza all'ossidazione. / *The metals in our collection are powder coated in order to coat our surfaces for decorative and protective purposes. The final thickness of the powder coating is particularly high contributing to a series of advantages for the painted product: mechanical resistance, resistance to corrosive agents, low flammability, precision in the application. The powder coatings used are non-toxic and solvent-free, for this reason powder coating is an ECO-FRIENDLY process, with a very low environmental impact. The chrome version is available where the metal or aluminum is coated with chrome, giving it hardness, chemical resistance and resistance to oxidation.*



V01 - Nero/Black



V02 - Bianco/White



V03 - Antracite/Anthracite



V04 - Titanio/Titanium



V05 - Bronzo/Bronze



V06 - Oro/Gold



CRO - Cromo/Chrome



CRN - Cromo Nero/
Black Chrome



ASP - Alluminio Spazzolato/
Polished Aluminium



Legno/Wood

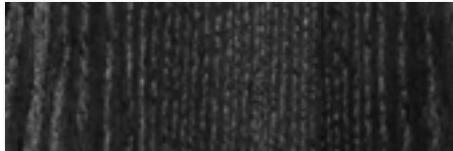
Il legno che viene utilizzato è tra i migliori che esistono sul mercato europeo. Viene lavorato con le migliori tecniche garantendo così resistenza e durata. *The wood which is used is one of the best available in European markets. It is worked with the best techniques guaranteeing resistance and durability.*

LEGNO MASSELLO/SOLID WOOD

Il legno utilizzato è un materiale di pregio che si caratterizza principalmente per la resistenza all'usura e per l'estetica. Durante il suo ciclo di crescita, sviluppo e maturazione, il legno si evolve nelle sue qualità come il cambio nel colore, nei nodi, e nelle vene. Essendo un materiale vivo, e naturale, può presentare delle variazioni di vene e di tonalità. *The wood used is a valuable material that is mainly characterized by its wear resistance and its aesthetics. During its cycle of growth, development and maturation, the wood's qualities. Evolve showing a change in color, in the knots, and in the veins. Being a living, natural material, it can present variations in veins and shades.*



FVC - Frassino tinto Noce Canaletto/
Canaletto Walnut stained Ash



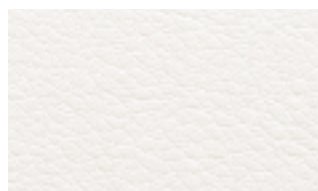
FNR - Frassino tinto Nero/Black stained Ash



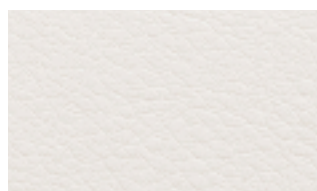
FTM - Frassino tinto Testa di Moro/
Dark Brown stained Ash

Finiture imbottiture / Upholstery Finishes

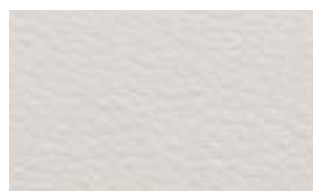
Rivestimento in ecopelle / Covering in eco-leather



1 Bianco



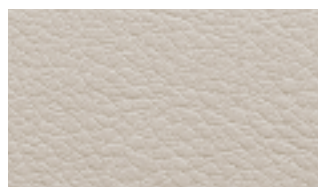
2 Latte



25 Panna



9 Avorio



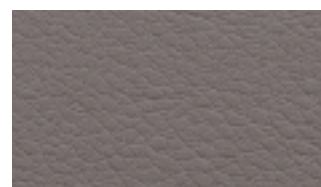
11 Beige



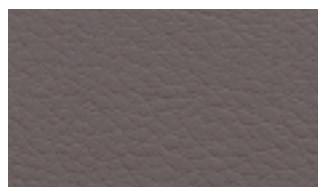
13 Canapa



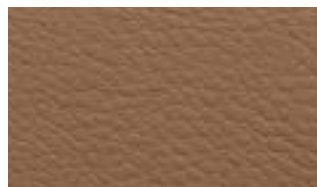
12 Beige scuro



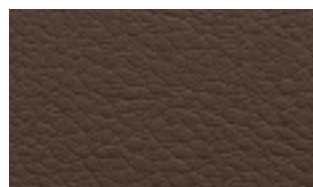
14 Fango



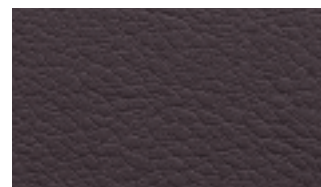
15 Tortora



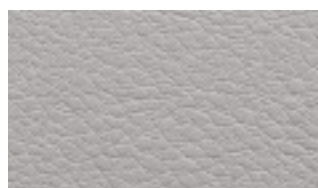
30 Tabacco



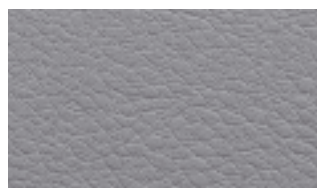
31 Marrone scuro



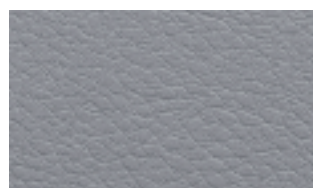
16 Testa di moro



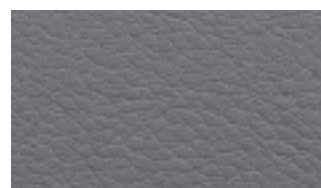
4 Grigio chiaro



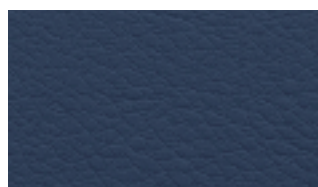
5 Grigio



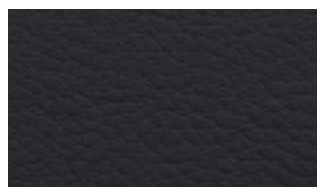
6 Cenere



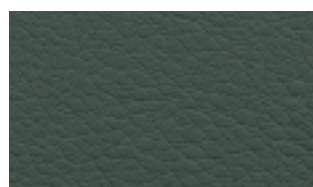
7 Antracite



56 Oceano



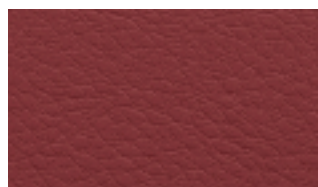
8 Nero



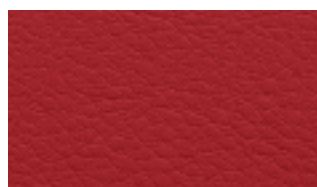
24 Verde scuro



23 Verde salvia



39 Bordeaux



35 Rosso

Rivestimento in econabuk / Covering in eco-nabuk



15 Bianco



1 Beige



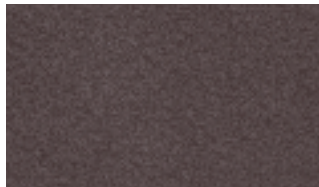
2 Marrone



3 Fango



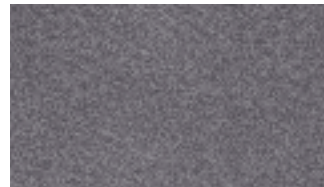
4 Cioccolato



5 Testa di moro



13 Grigio



6 Antracite



17 Blu



16 Bordeaux



11 Viola



12 Vinaccia



10 Ottanio

Rivestimento in econabuk / Covering in eco-nabuk



15 Bianco



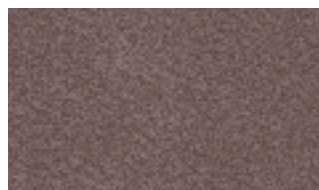
1 Beige



2 Marrone



3 Fango



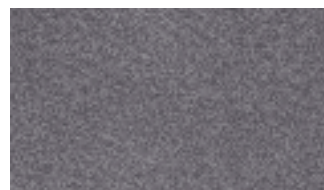
4 Cioccolato



5 Testa di moro



13 Grigio



6 Antracite



17 Blu



16 Bordeaux



11 Viola



12 Vinaccia



10 Ottanio

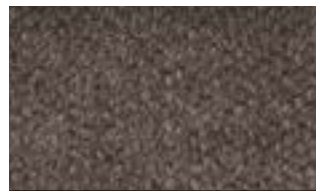
Rivestimento in tessuto A / *Covering fabric A*



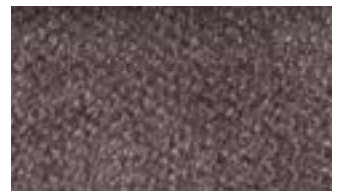
A 100



A 101



A 102



A 103



A 104



A 105



A 106



A 107



A 200



A 202



A 203



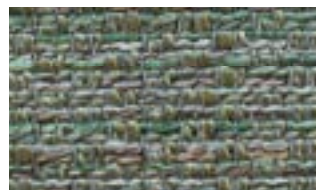
A 204



A 301



A 302

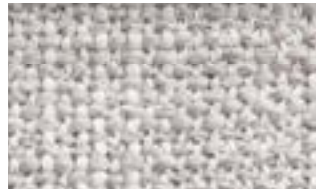


A 303

Rivestimento in tessuto B / Covering in fabric B



B 200



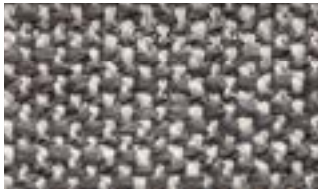
B 201



B 202



B 203



B 204



B 205



B 300



B 301



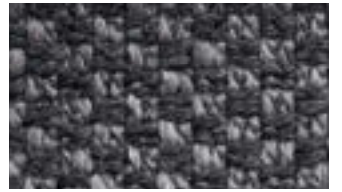
B 302



B 303



B 304



B 305



B 400



B 401



B 402



B 403



B 404



B 405



B 128



B 108



B 139



B 103



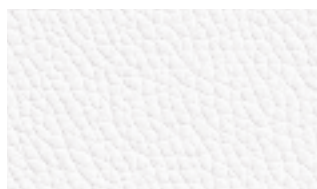
B 136



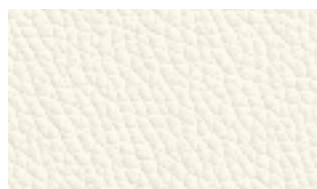
B 123



Rivestimento in pelle / Covering in leather



5000 Bianco



5518 Latte



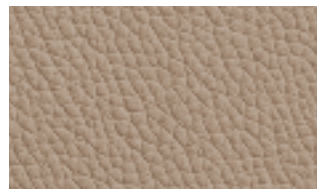
5508 Avorio



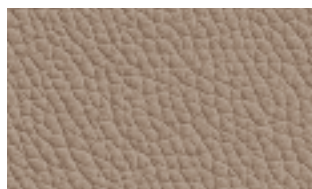
5480 Panna



5528 Beige



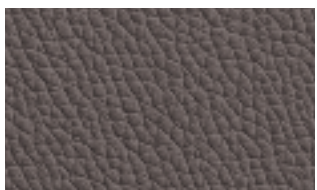
5320 Beige scuro



9034 Creta



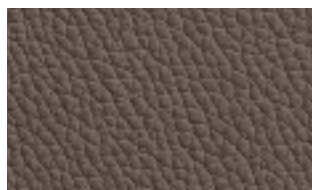
5502 Avana



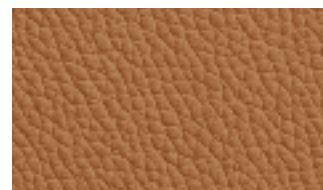
5414 Marrone



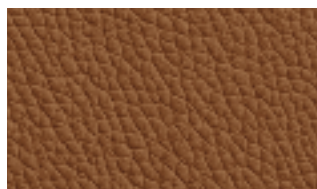
5522 Tortora



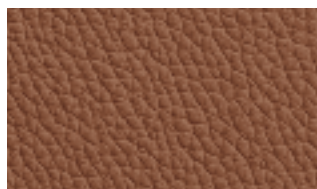
5504 Fango



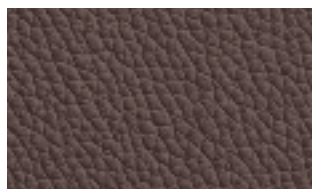
5070 Nocciola



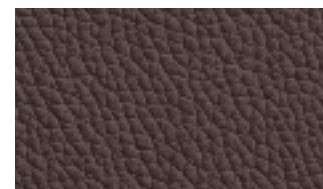
5110 Tabacco



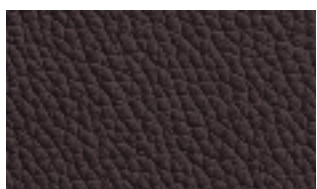
5090 Marrone chiaro



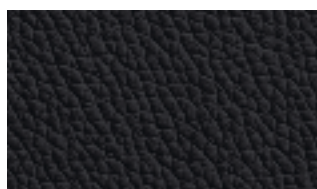
5400 Marrone scuro



9030 Cioccolato



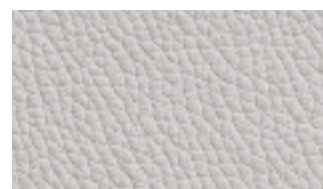
5270 Testa di moro



5300 Nero



5402 Grigio chiaro



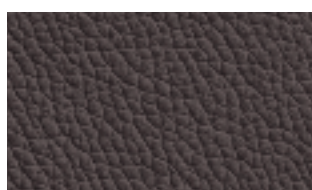
2256 Ghiaccio



5280 Cenere



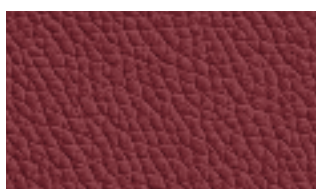
5290 Grigio medio



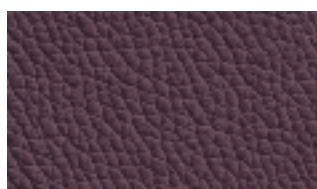
5310 Antracite



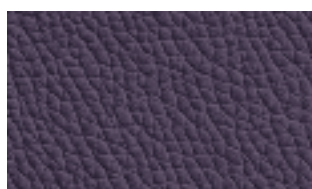
5200 Rosso



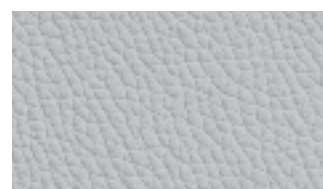
5210 Bordeaux



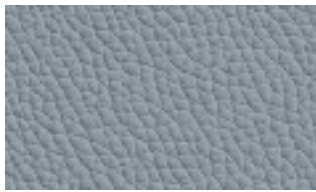
5460 Mora



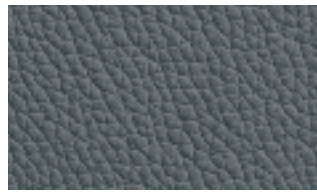
5406 Vinaccia



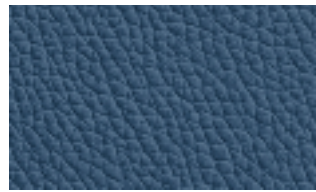
5420 Grigio



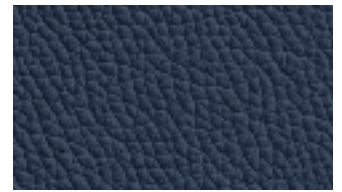
5416 Avio



5428 Ottanio



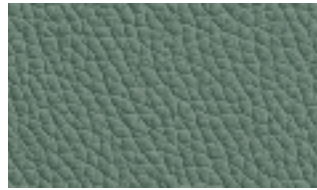
9031 Blu



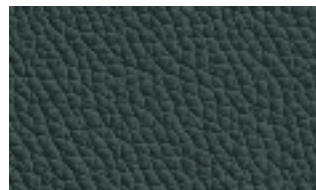
9021 Oceano



5431 Blu notte



5120 Verde salvia

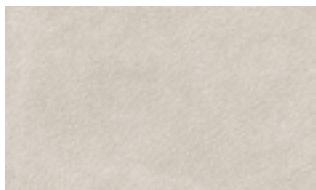


5150 Verde bosco

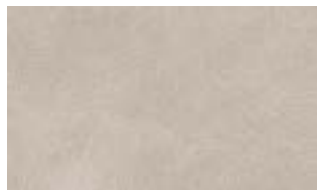


9045 Muschio

Rivestimento in pelle nabuk / *Covering in nabuk leather*



100 Sabbia



101 Conchiglia



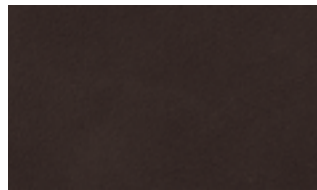
102 Seppia



103 Terra



110 Marrone



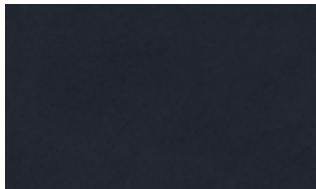
105 Marrone scuro



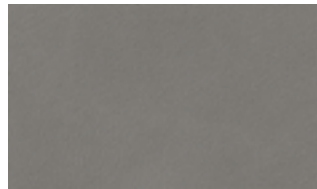
104 Salvia



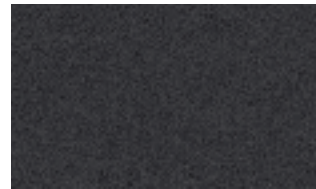
106 Orione



107 Oceano



108 Grigio



109 Antracite

Finiture dettagli / *Detail finishes*

Cordino in ecopelle e Zip / *Piping eco-leather and Zip*



1 Bianco



7 Antracite



8 Nero



11 Beige



14 Fango



16 Testa di Moro