

BONALDO

Tab

Designer: **Dondoli and Pocci**

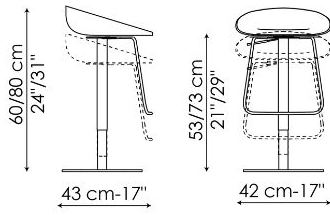


The Tab modern backless bar stool, designed by Dondoli & Pocci, is a functional element that creates an elegant and distinctive trait d'union with an open space kitchen or with the open bar of the living room, but which is also perfect for collective spaces in the contract sphere. Tab's rounded and

soft lines bring to mind the world of nature: the seat is in fact smoothed as if it were a pebble, so as to make the stool, together with the footrest, even more welcoming for a well-deserved moment of relaxation. Tab is available in emery-leather upholstery for a touch of elegance and warmth.



Data sheet



Tab

Width: 42cm

Depth: 43cm

Height: 60-80cm

Finishes

SEAT

Plastic



Polypropylene
Mat white



Polypropylene
Mat anthracite grey



Polypropylene
Mat red



Polypropylene
Mat dove grey

BASE AND FOOTREST

Metal



Painted metal
Mat white



Painted metal
Supreme anthracite



Painted metal
Mat red



Painted metal
Mat dove grey

Plus Metal



Painted metal
Mat bronze



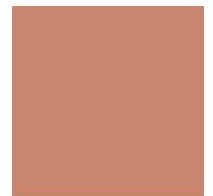
Painted metal
Mat lead



Painted metal
Mat pearl gold



Painted metal
Mat brass



Painted metal
Mat copper



Materials, fabrics, leathers, colors and finishes are approximate and may slightly differ from actual ones. You can find the complete collection of Bonaldo fabrics and leathers on the website

