

BONALDO

Pil too

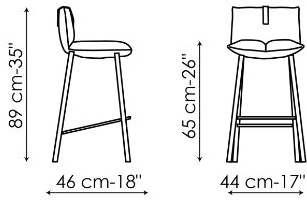
Designer: **Alessandro Busana**



In Pil too, softness is evident even before you sit on it. Inspired by the object that is itself the symbol of softness, the pillow, and usually interpreted as an accessory, here the pillow plays the starring role, shaped and adapted to create a chair that conveys comfort and relaxation. The main components of the Pil too design stool are the backrest cushion and the seat cushion. The latter features a fold in the middle, created to generate an enveloping effect that

physically and visually emphasises the feeling of softness. The base consists of metal legs, with the crossbars set at a special angle, to create an original graphic interweaving effect. In addition to the bar stool, other chairs complete the collection: Pil, (chair), Pil up (chair with higher backrest), Miss Pil (chair with armrests), Miss Pil up (chair with higher backrest and armrests), the Pil armchair and the Pil Armchair hi.

Data sheet

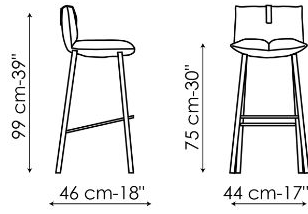


Pil too H 65

Width: 44cm

Depth: 46cm

Height: 89cm



Pil too H 75

Width: 44cm

Depth: 46cm

Height: 99cm

Finishes

LEGS

Metal



Painted metal
Mat white



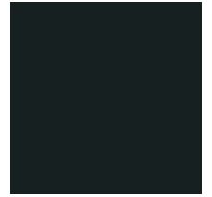
Painted metal
Mat dove grey



Painted metal
Mat brown



Painted metal
Supreme anthracite



Painted metal
Mat black

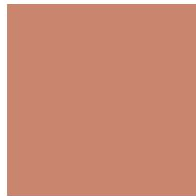
Plus Metal



Painted metal
Mat bronze



Painted metal
Mat lead



Painted metal
Mat copper



Painted metal
Mat brass



Painted metal
Mat pearl gold

Materials, fabrics, leathers, colors and finishes are approximate and may slightly differ from actual ones. You can find the complete collection of Bonaldo fabrics and leathers on the website

