

BONALDO

Pil, Pil up, Miss Pil, Miss Pil up

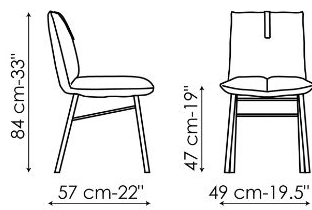


Pil is a collection inspired by the object that is itself a symbol of softness, the pillow. Usually interpreted as an accessory, here the pillow plays the starring role, shaped and adapted to create a chair that conveys comfort and relaxation. The main components of the Pil soft chair are the backrest cushion and the seat cushion. The latter features a fold in the middle, created to generate an enveloping effect that physically and

visually emphasises the feeling of softness. The base consists of metal legs, with the crossbars set at a special angle, to create an original graphic interweaving effect. Available in different versions: Pil, Pil up (with higher backrest), Miss Pil (with armrests), Miss Pil up (with higher backrest and armrests), Pil too (stool), Pil armchair and Pil armchair hi.



Data sheet

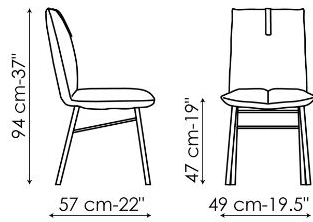


Pil

Width: 49cm

Depth: 57cm

Height: 84cm

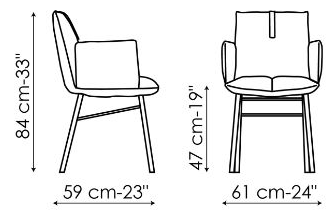


Pil up

Width: 49cm

Depth: 57cm

Height: 94cm

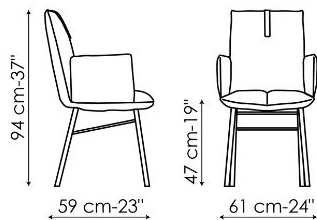


Miss Pil

Width: 61cm

Depth: 59cm

Height: 84cm



Miss Pil up

Width: 61cm

Depth: 59cm

Height: 94cm

Finishes

LEGS

Metal



Painted metal
Mat white



Painted metal
Mat dove grey



Painted metal
Mat brown



Painted metal
Supreme anthracite



Painted metal
Mat black

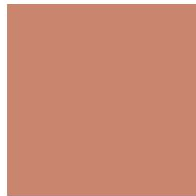
Plus Metal



Painted metal
Mat bronze



Painted metal
Mat lead



Painted metal
Mat copper



Painted metal
Mat brass

Materials, fabrics, leathers, colors and finishes are approximate and may slightly differ from actual ones. You can find the complete collection of Bonaldo fabrics and leathers on the website

