

BONALDO

Neuilly pouf

Designer: **Fabrice Berrux**

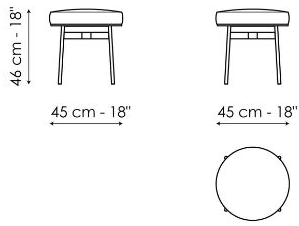


The Neuilly round pouf is available in two different sizes and is characterized by the immediately recognizable slender tubular metal frame which can be found in the other pieces of furniture in the Neuilly collection, together with the

generous padding of the support. Visual elegance and purity of form are the stylistic features of this versatile and light-figured piece of furniture.



Data sheet

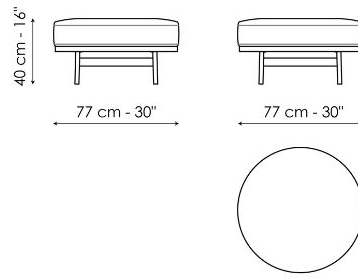


Neilly pouf Ø45

Width: 45cm

Depth: 45cm

Height: 46cm



Neilly pouf Ø77

Width: 77cm

Depth: 77cm

Height: 40cm

Finishes

BASE

Metal



Painted metal
Mat white



Painted metal
Mat dove grey



Painted metal
Supreme anthracite



Painted metal
Mat black

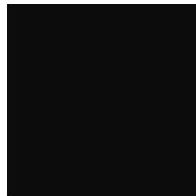
Special Metal



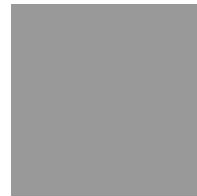
Metal finish
Brown nickel



Painted steel
Brushed nickel

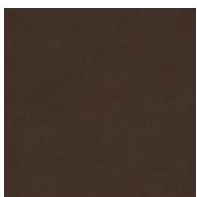


Metal finish
Dark nickel

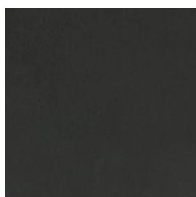


Metal finish
Clouded chrome

Plus Metal



Painted metal
Mat bronze



Painted metal
Mat lead



Painted metal
Mat pearl gold

