

# **BONALDO**

## Deli

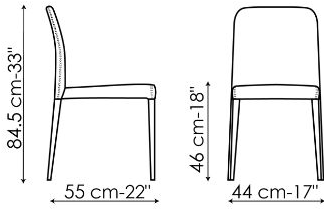


Characterised by a versatility that allows it to be at home in any environment, Deli is a classic designer chair with upholstery in leather, eco-leather or emery-leather. The legs can be fully upholstered or visible, in painted metal, creating tone-on-tone combinations or interesting contrasts with the upholstered section. The slim, tapered profile of its legs gives it a harmonious and elegant look, while the compact

structure makes it comfortable as well as resistant. Deli has an essential, clean and minimalist style, embellished with fine sartorial details and designed to ensure the utmost comfort thanks to the soft seat and the wide and low backrest. A chair that sits perfectly with the dining table of a home with timeless good taste.



# Data sheet



## Deli

Width: 44cm

Depth: 55cm

Height: 84.5cm

# Finishes

## LEGS

### Metal



**Painted metal**  
Mat white



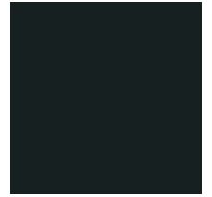
**Painted metal**  
Mat dove grey



**Painted metal**  
Supreme anthracite



**Painted metal**  
Mat brown



**Painted metal**  
Mat black

### Plus Metal



**Painted metal**  
Mat bronze



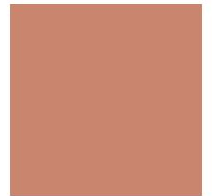
**Painted metal**  
Mat lead



**Painted metal**  
Mat pearl gold



**Painted metal**  
Mat brass



**Painted metal**  
Mat copper

---

Materials, fabrics, leathers, colors and finishes are approximate and may slightly differ from actual ones. You can find the complete collection of Bonaldo fabrics and leathers on the website

