

# **BONALDO**

## Kadou, Kadou light

Designer: **Ryosuke Fukusada**

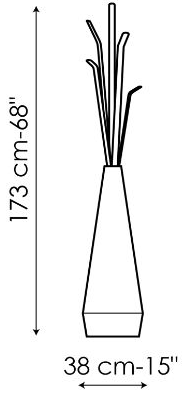


Kadou is an elegant modern freestanding coat rack that recalls the shapes of a vase of flowers: its name in Japanese means “the art of flowers”. The frame is in plastic, available in five colours for the two tone version and four colours for the single colour version, while for the branches, made in painted metal, it is possible to choose from among numerous different colours. The coat stand is also available in the

version with light (Kadou light), with white base: thanks to the light source located within, it can also be used at the same time as a lamp. Simple in its materials, but pleasantly sophisticated in its design and shape, Kadou is a design product with a striking aesthetic connotation, able to furnish in style, as well as telling a highly evocative story.

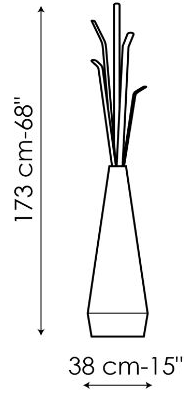


# Data sheet



## **Kadou**

Width: 38cm  
Depth: 38cm  
Height: 173cm



## **Kadou light**

Width: 38cm  
Depth: 38cm  
Height: 173cm

# Finishes

## BRANCHES

### Metal



**Painted metal**  
Mat white



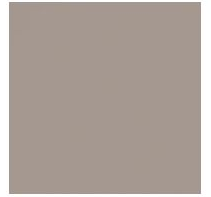
**Painted metal**  
Supreme anthracite



**Painted metal**  
Mat brick red



**Painted metal**  
Mat racing green



**Painted metal**  
Mat dove grey

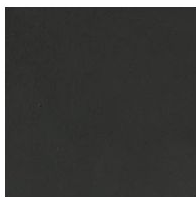


**Painted metal**  
Mat green

### Plus Metal



**Painted metal**  
Mat bronze



**Painted metal**  
Mat lead

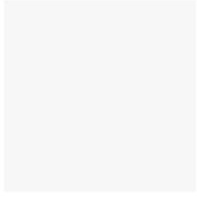


**Painted metal**  
Mat pearl gold

---

## BASE - KADOU

Plastic



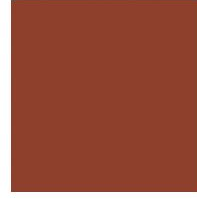
**Polyethylene**  
Mat white



**Polyethylene**  
Mat dove grey



**Polyethylene**  
Mat racing green



**Polyethylene**  
Mat brick orange

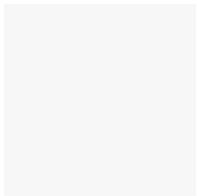


**Polyethylene**  
Mat lead

---

## BASE - KADOU LIGHT

Plastic



**Polyethylene**  
Mat white

---

Materials, fabrics, leathers, colors and finishes are approximate and may slightly differ from actual ones. You can find the complete collection of Bonaldo fabrics and leathers on the website

