

BONALDO

Bahia

Designer: **Mauro Lipparini**

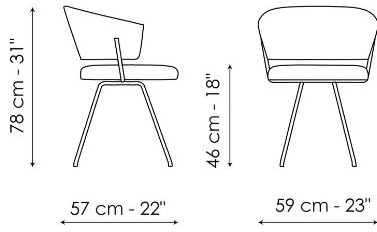


The assembly of curved shapes and simple tubular metal elements creates a balanced shape, which is ideal both in residential settings and in smart contract environments such as offices, waiting rooms and hotel lobbies. The main characteristic of Bahia is the curved backrest that extends forward in a single line, allowing the arms to rest freely while enveloping the user's back for maximum comfort.

Comfortable from the first glance, thanks to its organic shapes, the collection is also characterised by slender legs in metal, flexing outwardly: and the frame, thin but rigorous, that highlights through contrast the sinuousness of the backrest and seat. The Bahia dining chair is upholstered in leather, eco-leather or fabric.



Data sheet



Bahia

Width: 59cm

Depth: 57cm

Height: 78cm

Finishes

LEGS

Metal



Painted metal
Mat white



Painted metal
Mat dove grey



Painted metal
Supreme anthracite



Painted metal
Mat black



Painted metal
Mat brown

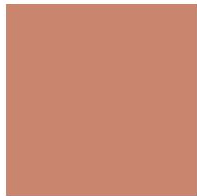
Plus Metal



Painted metal
Mat bronze



Painted metal
Mat lead



Painted metal
Mat copper

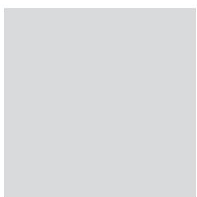


Painted metal
Mat brass

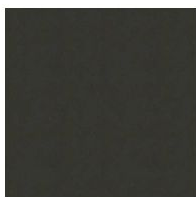


Painted metal
Mat pearl gold

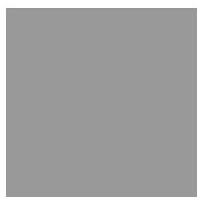
Special Metal



Metal finish
Chromed



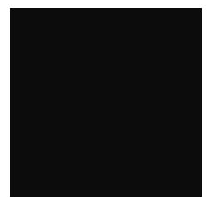
Metal finish
Burnished



Metal finish
Clouded chrome



Metal finish
Brown nickel



Metal finish
Dark nickel

Materials, fabrics, leathers, colors and finishes are approximate and may slightly differ from actual ones. You can find the complete collection of Bonaldo fabrics and leathers on the website

