

# BONALDO

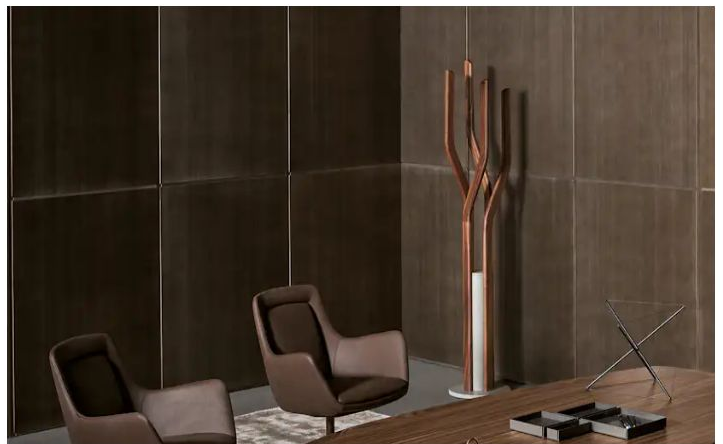
## Alma

Designer: **Spazioameno**

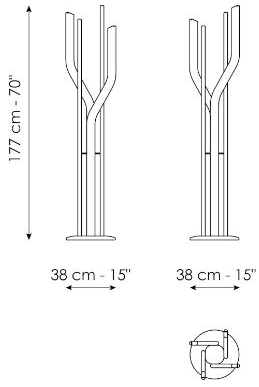


Alma is an elegant floor-mounted clothes hanger that draws inspiration from the fascinating world of plants, whose natural vitality it evokes through rigorous formal research. It consists of a concrete base on which the four solid wood stems with geometric profiles stand in contrast and which come in different heights. Thanks to the different orientations

and sinuous lines, a highly dynamic spiral effect is created, in which the concrete base acts as a pivot. Alma is an accessory with a sophisticated and elegant personality that becomes a totemic presence, ideal for "enlivening" both residential environments and accommodation facilities.



# Data sheet



## Alma

Width: 38cm

Depth: 38cm

Height: 177cm

# Finishes

## BRANCHES

Wood

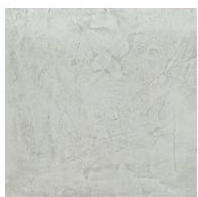


**Solid wood**  
American walnut

---

## BASE AND CENTRAL COLUMN

Concrete



**Concrete**  
Travertin look



**Concrete**  
Grey

---

Materials, fabrics, leathers, colors and finishes are approximate and may slightly differ from actual ones. You can find the complete collection of Bonaldo fabrics and leathers on the website

