



Bombosoft

Bombosoft is a padded bed with a soft and cosy headboard. The generous padding and soft backrest suggest, also visually, an idea of relaxation and comfort. All details are skilfully crafted. Bombosoft is available in a sommier version, and with a storage unit. In the latter case, it is fitted with a mechanism that allows the bedspring to be raised to two positions, 45° or horizontally. The interior is customised with removable panels and handles in hide, and is fully upholstered.

DESIGN Bluezone

Bombosoft is a padded bed with a soft and cosy headboard. The generous padding and soft backrest suggest, also visually, an idea of relaxation and comfort. All details are skilfully crafted. Bombosoft is available in a sommier version, and with a storage unit. In the latter case, it is fitted with a mechanism that allows the bedspring to be raised to two positions, 45° or horizontally. The interior is customised with removable panels and handles in hide, and is fully upholstered.

Bluezone

In 1997 Kristalia created an in-house structure that deals with research and development, where new materials and manufacturing techniques are for product engineering are experimented. The work group, which is composed of professionals and technicians with solid and varied experience in the field of design and communication, can rely on a well-equipped prototype shop to give shape to new ideas.

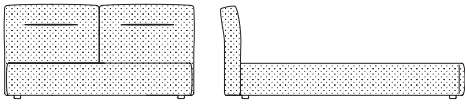
Dal 1997 Kristalia ha creato una struttura interna che si occupa di ricerca e sviluppo, dove si sperimentano nuovi materiali e nuove tecniche costruttive per l'ingegnerizzazione dei prodotti. Il gruppo, che è formato da professionisti e tecnici che hanno una consolidata e diversificata esperienza nel campo della progettazione e della comunicazione, può contare su di un attrezzatissimo reparto di prototipazione nel quale dare forma alle nuove idee.

Sizes

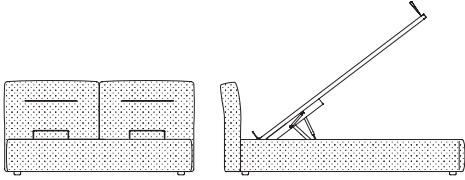
Type

H 88 cm

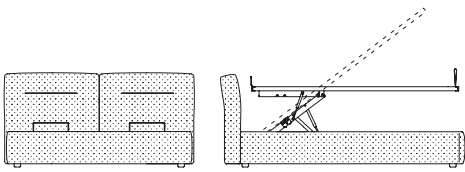
H 34⁵/₈"



On floor



With storage, lifting 45°



With storage, lifting 45°+ horizontal

For mattresses

L 150 P 200 cm L 160 P 200 cm L 183 P 203 cm
W 59" D 78⁶/₈" W 63" D 78⁶/₈" W 74⁶/₈" D 79⁷/₈"

L 153 P 203 cm L 170 P 200 cm L 190 P 200 cm
W 60²/₈" D 79⁷/₈" W 66⁷/₈" D 78⁶/₈" W 74⁶/₈" D 78⁶/₈"

L 160 P 190 cm L 180 P 200 cm L 193 P 203 cm
W 63" D 74⁶/₈" W 70⁷/₈" D 78⁶/₈" W 76" D 79⁷/₈"

FINISHES

Alveo fabric



111



130



200



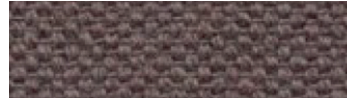
430



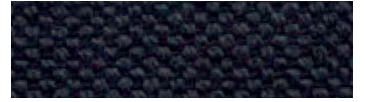
600



602



603



632



705



802



901



902

Composition: 100% recycled cotton
Abrasion: app. 25.000 Martindale
Cleaning and care:



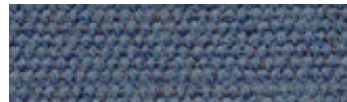
Biacco fabric



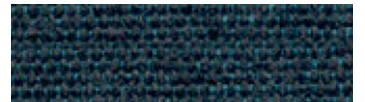
53



14



06



13



11



15

Composition: 75% recycled CO, 25% PL
Abrasion: app. 40.000 Martindale
Cleaning and care:



Borgo fabric



15



17



37



92



98



93



25



76



137

Composition: PC 51% , LI 11%, PL 11%,
VI 11%, CO 16%
Abrasion: app. 25.000 Martindale
Cleaning and care:



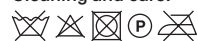
FINISHES

Canvas 2 (Kvadrat) fabric



Design: Giulio Ridolfo
Composition: 90% new wool,
worsted, 10% nylon

Abrasion: app. 100.000 Martindale
Cleaning and care:



FINISHES

Divina Melange 3 (Kvadrat) fabric



Design: Finn Sködt
 Composition: 100% new wool
 Abrasion: app. 45.000 Martindale
 Cleaning and care:



FINISHES

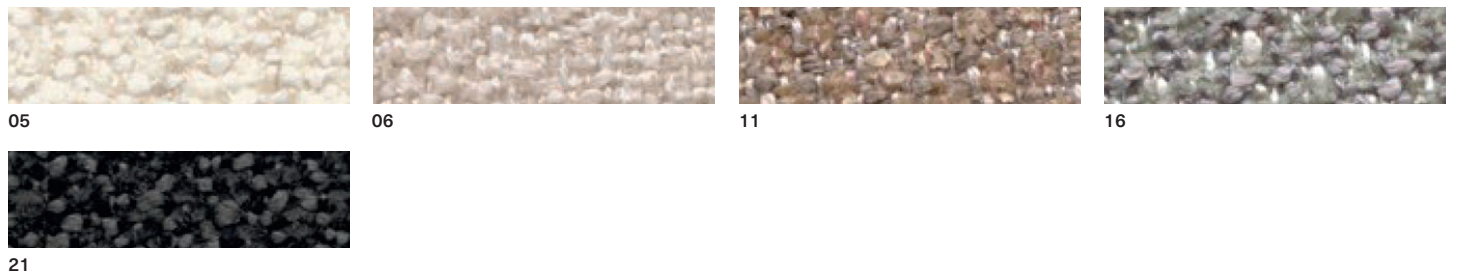
Field 2 (Kvadrat) fabric



Design: Alfredo Häberli
 Composition: 100% Trevira CS
 Abrasion: app. 100.000 Martindale

Cleaning and care:

Greto fabric

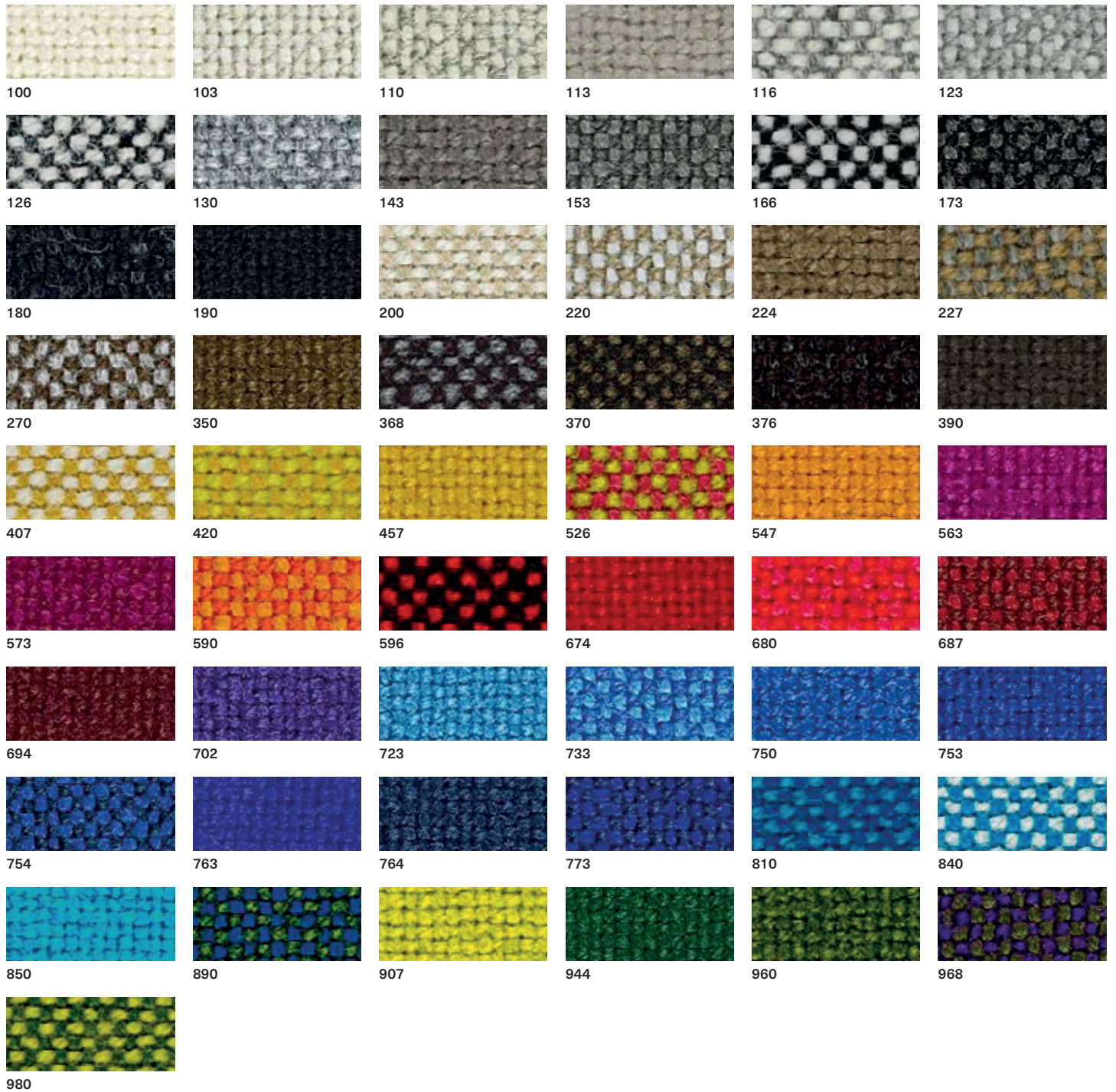



Composition: PL 33% , PC 25%,
 VI 23%, CO 10%, LI 9%
 Abrasion: app. 50.000 Martindale

Cleaning and care:

FINISHES

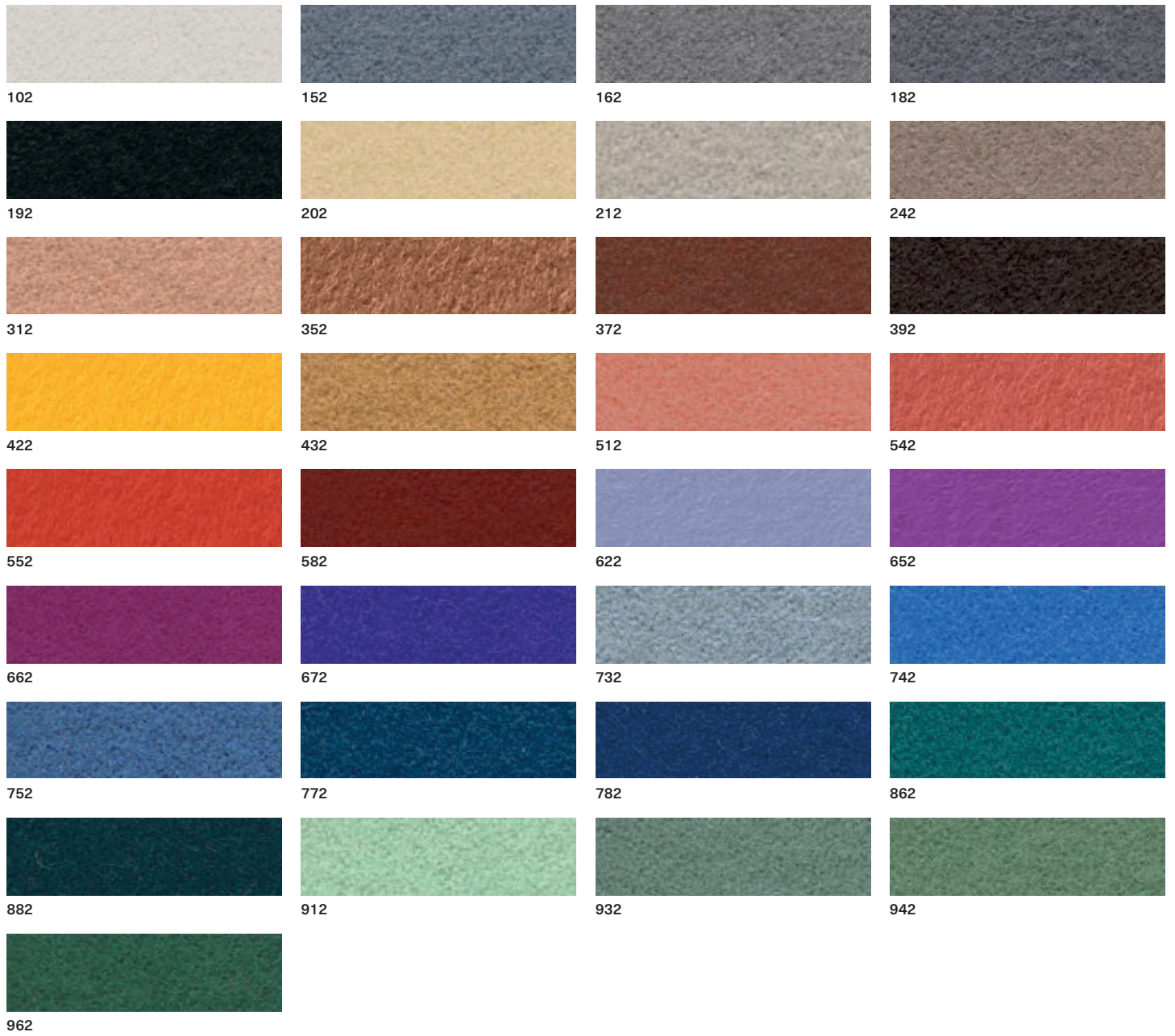
Hallingdal 65 (Kvadrat) fabric



Design: Nanna Ditzel
 Composition: 70% new wool,
 30% viscose
 Abrasion: app. 100.000 Martindale
 Cleaning and care:


FINISHES

Hero 2 (Kvadrat) fabric



Composition: 96% new wool, 4% nylon
 Abrasion: app. 45.000 Martindale
 Cleaning and care:



Merit (Maharam) fabric



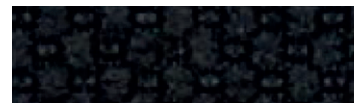
001



002



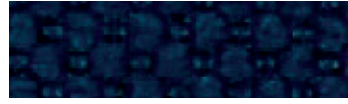
003



004



005



006



007



008



009



010



011



012



013



014



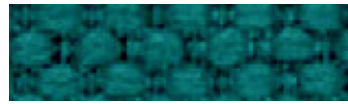
015



016



017



018



019



020



021



022



023



024



025



026



027



028



029



030



031



032



033



034



035



036



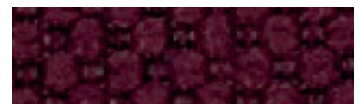
037



038



039



040



041



042



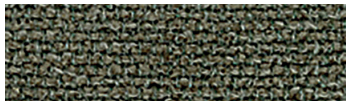
043

Composition: 76% post-consumer recycled polyester, 24% polyester
 Abrasion: app. 85.000 Martindale
 Cleaning and care:



FINISHES

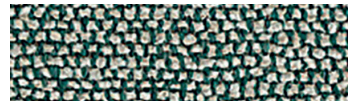
Moss (Sahco) fabric



0001



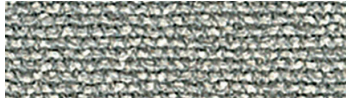
0002



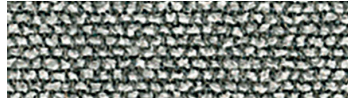
0003



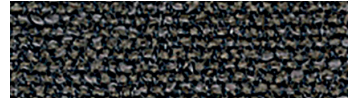
0004



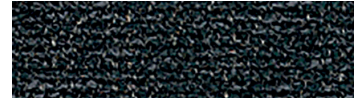
0005



0006



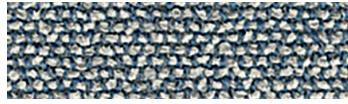
0007



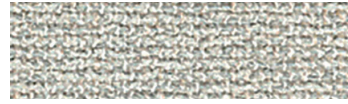
0008



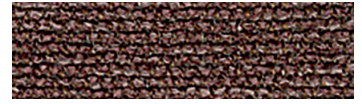
0009



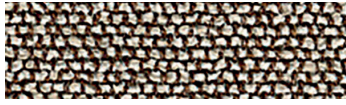
0010



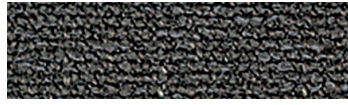
0011



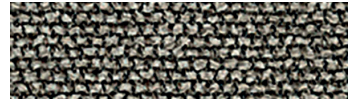
0012



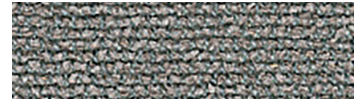
0013



0014



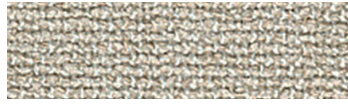
0015



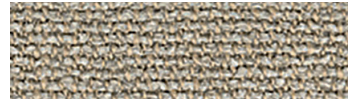
0016



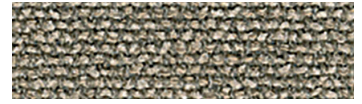
0017



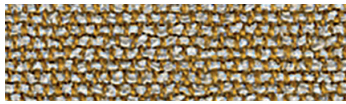
0018



0019



0020



0021



0022

Design: Vincent Van Duysen
 Composition: 52% Cotton,
 22% Viscose, 14% Acrylic,
 6% Linen, 3% Polyester, 3% Nylon
 Weight: 920 g/lin.m
 Durability: 50.000 Martindale

Pilling: 4-5
 Lightfastness: 6-7
 Cleaning and care:

Orsetto (ONE Mario Sirtori) fabric



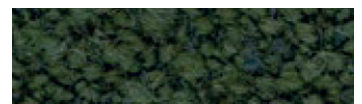
01/2



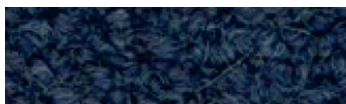
98/21



02/26



98/18



98/20

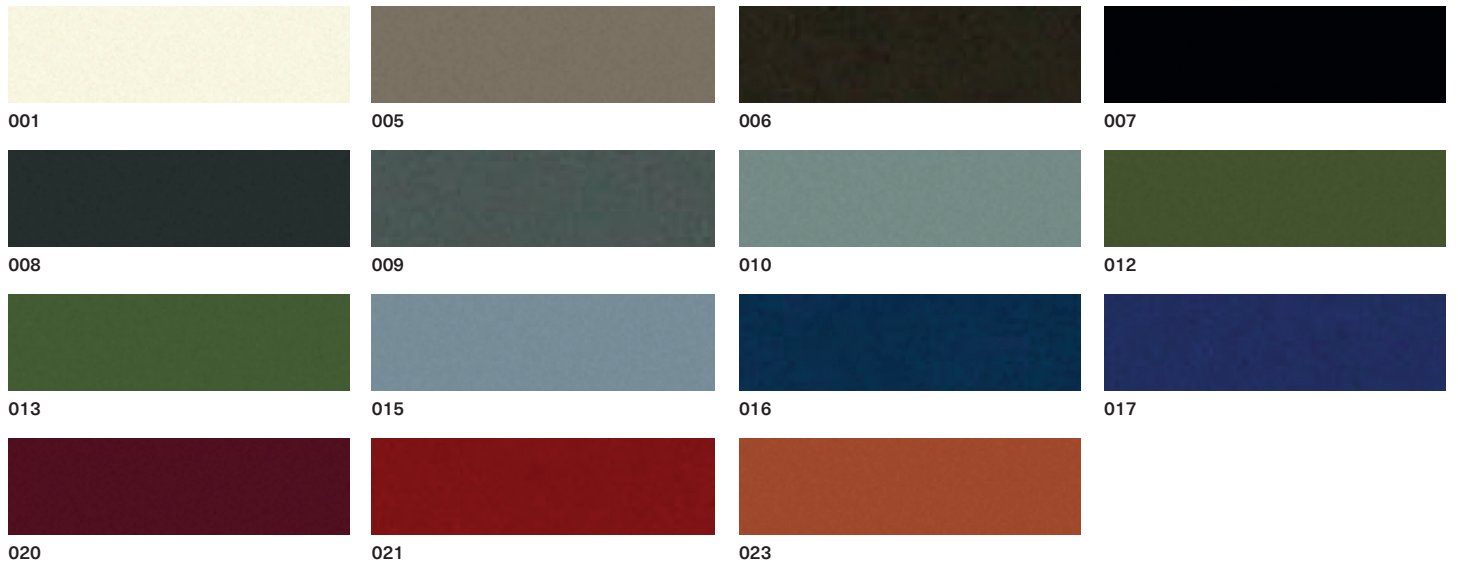


98/16

Composition: 34% Viscose, 33%
 Acrylic, 17% Wool, 8% Polyester, 4%
 Flax, 4% Cotton
 Abrasion: app. 80.000 Martindale
 Cleaning and care:

FINISHES

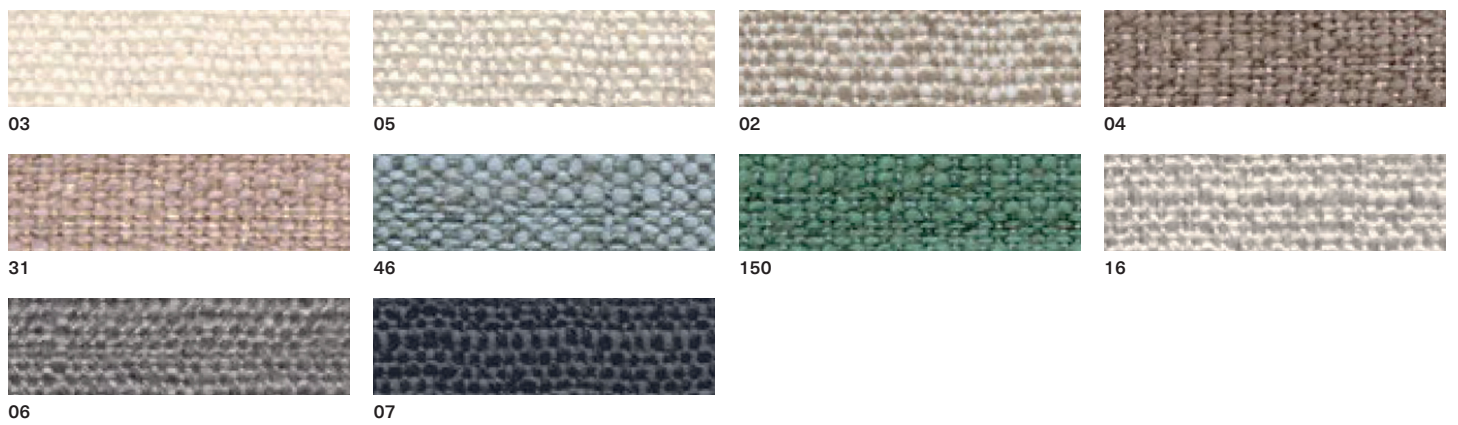
Scuba (Maharam) fabric



Composition: 100% polyurethane (surface), 100% polyester (backing)
 Abrasion: app. 100.000 Martindale
 Cleaning and care:



Stipa fabric



Composition: VI 34% , CO 31%, LI 15%,
 PC 13%, PL 7%
 Abrasion: app. 25.000 Martindale
 Cleaning and care:



Steelcut Trio 3 (Kvadrat) fabric



Design: Frans Dijkmeijer
and Giulio Ridolfo
Composition: 90% new wool,
worsted, 10% nylon
Abrasion: app. 100.000 Martindale
Cleaning and care:



FINISHES

Vello fabric



01



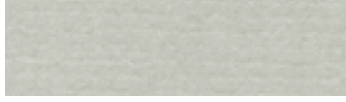
03



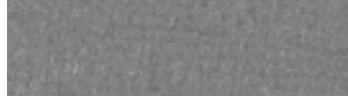
05



07



29



28



2002



26



14



70



2007



58



1041

Composition: 100% Cotton
Abrasion: app. 70.000 Martindale
Cleaning and care:



Verso fabric



01



03



51



05



09



30



10



15

Composition: VI 34% , CO 31% , LI 15% ,
PC 13% , PL 7%
Abrasion: app. 25.000 Martindale
Cleaning and care:



FINISHES

Elmosoft IX (Elmo) semi-aniline leather

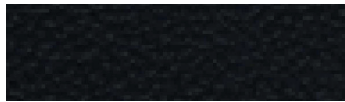


FINISHES

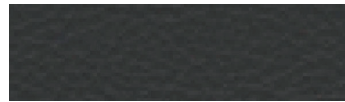
Neocoast leather (Elmo)



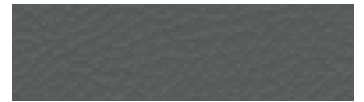
99076



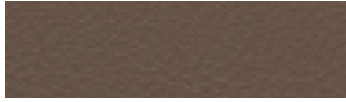
91097



91100



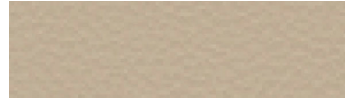
71010



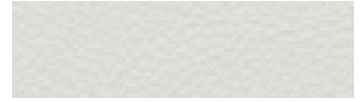
18008



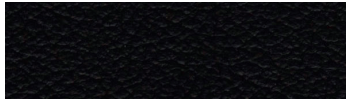
12097



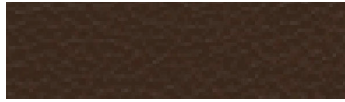
02061



00114



93090



98016



43041



43084



95042



55058



45024



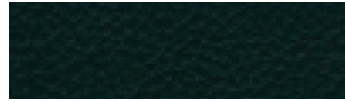
44015



77022



77035



98043



88017

FINISHES

Valencia synthetic leather (Spradling)



Composition: Topcoat 100% vinyl,
backing 100% polyester Hi-Loft
Abrasion: app. 300.000 Martindale
Cleaning and care:



Shades of colour cannot be
reproduced exactly on printed paper.
MD House Srl is entitled to make
modifications at any time and without
prior notice.

Nella stampa su carta la tonalità dei
colori non può essere riprodotta
fedelmente. MD House Srl si riserva
la facoltà di apportare modifiche in
qualsiasi momento e senza preavviso.