

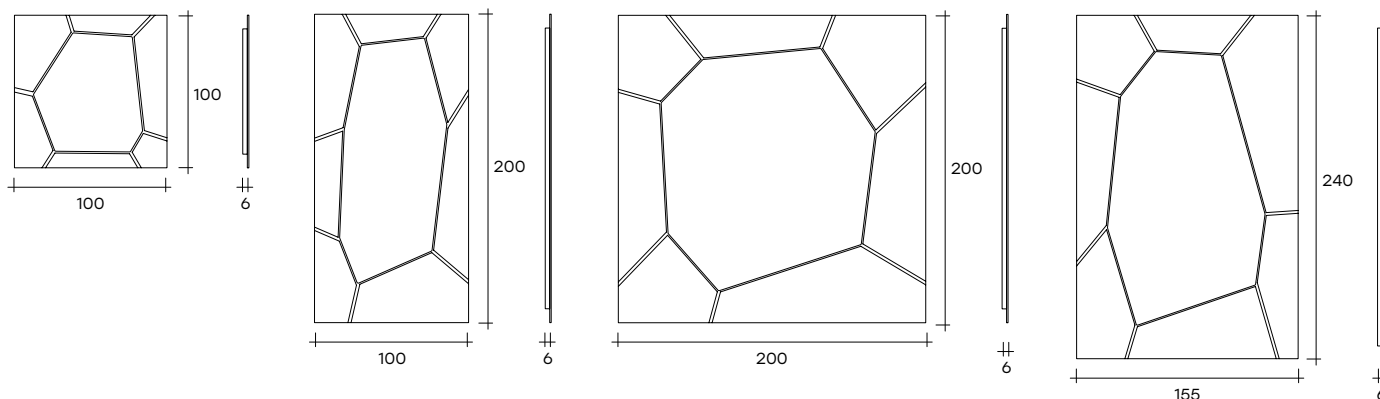
silica

DESIGN
ARIK LEVY

modello registrato
registered model

Specchio da parete o da terra con cornice in vetro da 6 mm fuso a gran fuoco e retroargentato, con texture ottenuta da un decoro artigianale realizzato a mano. Specchio piano da 5 mm. Telaio posteriore in metallo verniciato. Possibilità di appendimento in verticale od orizzontale.

Free-standing or hanging mirror with 6 mm-thick high-temperature fused and back-silvered glass frame, with texture achieved through a handcrafted decoration. 5 mm-thick flat mirror. Painted metal rear frame. It can be hung horizontally or vertically.



dimensioni L, P, H
dimensions L, W, H
(cm)

	COD./CODE	L/Ø	P/W	H	peso netto net weight (kg)	peso lordo gross weight (kg)	volume imballo package volume (m ³)
Specchio quadrato. Square mirror.	SILQ/100	100	6	100	28	56	0,32
	SILQ/200°	200	6	200	104	192	1,4
Specchio rettangolare. Rectangular mirror.	SILR/200°	100	6	200	54	105	0,66
	SILR/240°	155	6	240	97	177	1,25

° Modelli forniti con piedini smontabili per versione da terra.

° Items provided with removable feet for free standing version.

FINITURE VETRO PARTE FUSA FUSED GLASS FINISH

Vetro fumè
Smoked glass

SPESSORE THICKNESS

6 mm

Vetro bronzo
Bronze glass

6 mm

FINITURE VETRO PARTE FUSA + VETRO SPECCHIO CENTRALE FUSED GLASS+CENTRAL MIRROR GLASS FINISH

Vetro fumè
Smoked glass

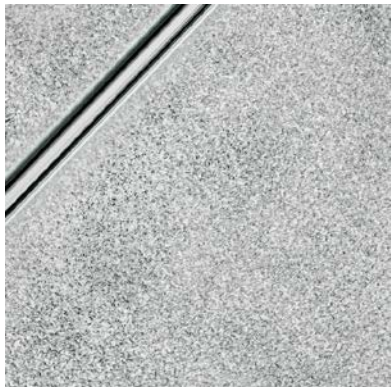
SPESSORE THICKNESS

5/6 mm

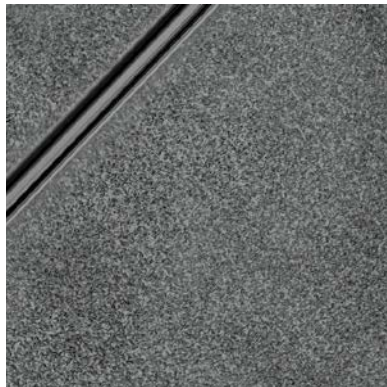
Vetro bronzo
Bronze glass

5/6 mm

FINITURE
FINISHES

Cornice in vetro fuso
Fused glass frame

vetro fuso retroargentato
back-silvered fused glass



vetro fumé fuso
e retroargentato
Fused and back-silvered
smoked glass



vetro bronzo fuso
e retroargentato
Fused and back-silvered
bronze glass