

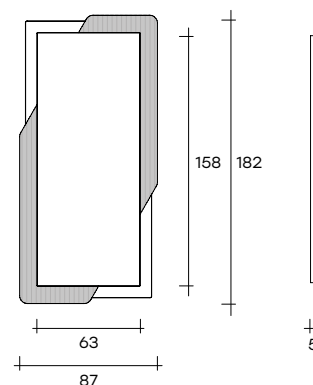
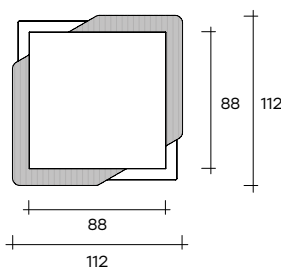
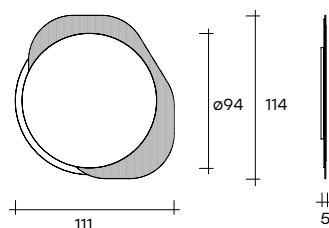
shift

DESIGN FRANCESCA
LANZAVECCHIA

modello registrato
registered model

Specchio da parete
con cornice composta
da due elementi in vetro:
parte in vetro trasparente
o bronzo da 6 mm fuso a gran
fuoco retroargentato;
parte in vetro piano fumè
o bronzo da 6 mm.
Specchio piano da 5 mm.
Possibilità di appendimento
verticale od orizzontale.

*Hanging mirror
with frame composed
of two glass elements:
a part in 6 mm-thick
high-temperature fused
glass in transparent
or bronze finish; a part
in 6 mm-thick flat glass
in smoked or bronze
finish.
5 mm-thick flat mirror.
It can be hung horizontally
or vertically.*



dimensioni L, P, H
dimensions L, W, H
(cm)

Parte cornice in vetro trasparente
fuso e retroargentato;
parte cornice in vetro piano fumè.

*Part of the frame made of fused
and back-silvered transparent
glass; part of the frame made
of smoked flat glass.*

Parte cornice in vetro bronzo
fuso e retroargentato;
parte cornice in vetro piano bronzo.

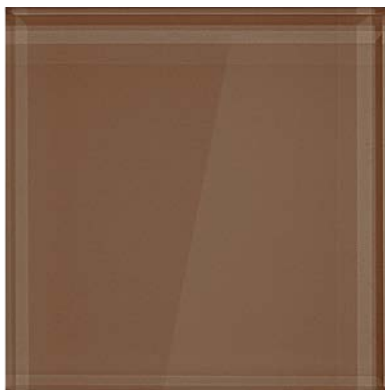
*Part of the frame made of fused
and back-silvered bronze glass;
part of the frame made
of bronze flat glass.*

	COD./CODE	Ø/L	P/W	H	peso netto net weight (kg)	peso lordo gross weight (kg)	volume imballo package volume (m ³)
	SHFQ/112-VF	112	5	112	42	77	0,43
	SHFR/182-VF	87	5	182	52	92	0,53
	SHFT/114-VF	111	5	114	37	72	0,43
	SHFQ/112-VBF	112	5	112	42	77	0,43
	SHFR/182-VBF	87	5	182	52	92	0,53
	SHFT/114-VBF	111	5	114	37	72	0,43

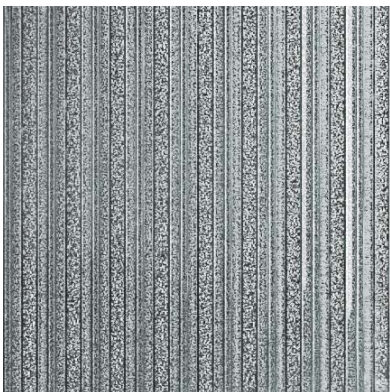
FINITURE
FINISHES

Parte cornice in vetro liscio
Flat glass frame part

vetro fumé
smoked glass



vetro bronzo
bronze glass

Parte cornice in vetro fuso
Fused glass frame part

vetro fuso
retroargentato
Back-silvered
fused glass



vetro bronzo fuso
e retroargentato
Fused and back-silvered
bronze glass