



york

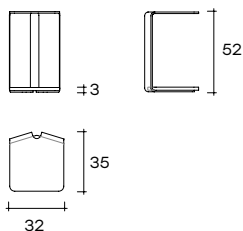
DESIGN
YONOH STUDIO

modello registrato
registered model

Tavolino di servizio
con struttura in vetro
curvato da 10 mm
disponibile nelle varianti
extralight, bronzo o
fumè. Base in marmo.

Side table with 10 mm
curved glass structure,
available in extralight,
bronze or smoked glass.
Marble base.

portata sul piano: 10 kg
load capacity on top: 10 kg



dimensioni L, P, H
dimensions L, W, H
(cm)

	COD./CODE	L	P/W	H	peso netto net weight (kg)	peso lordo gross weight (kg)	volume imballo package volume (m ³)
Tavolino in vetro curvato con base in marmo Cat.M1. <i>Side table in curved glass with marble base, Cat.M1.</i>	YOR52/	32	35	52	13	22	0,14
Tavolino in vetro curvato con base in marmo Cat.M2. <i>Side table in curved glass with marble base, Cat.M2.</i>	YOR52/	32	35	52	13	22	0,14

BASE IN MARMO MARBLE BASE

CAT. MARMO MARBLE CAT.	NOME NAME	CODICE CODE
CAT.M1	Mystic Brown <i>Mystic Brown</i>	M1MB
	Grigio Carnico <i>Carnico Grey</i>	M1GC
CAT.M2	Calacatta Royal <i>Calacatta Royal</i>	M2CR
	Manhattan <i>Manhattan</i>	M2MN

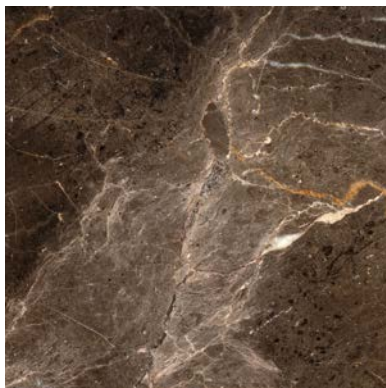
STRUTTURA IN VETRO GLASS STRUCTURE

NOME NAME	CODICE CODE
Extralight <i>Extralight</i>	EX
Fumè <i>Smoked</i>	GR
Bronzo <i>Bronze</i>	BR

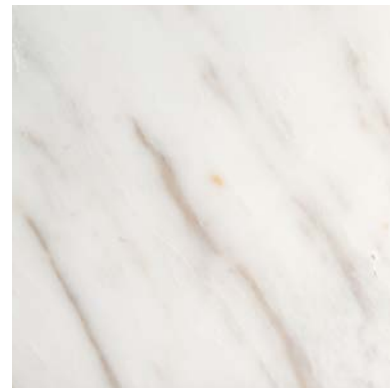
**FINITURE
FINISHES**

**Base in marmo
Marble glass**

Grigio Carnico
Carnico grey



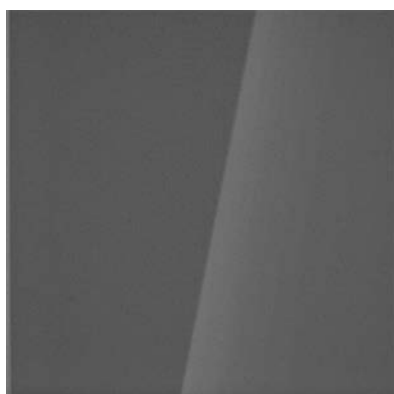
Mystic Brown
Mystic Brown



Calacatta Royal
Calacatta Royal



Manhattan
Manhattan

**Struttura in vetro curvato
Curved glass structure**

Fumé
Smoked



Bronzo
Bronze



Extralight
Extralight