

Tonbo

Kensaku Oshiro, 2022



Chair / Armchair

Sedute ispirate all'ebanisteria giapponese. Lo schienale dalle linee organiche si appoggia con delicatezza sulla struttura, come farebbe una libellula – Tonbo, in giapponese.

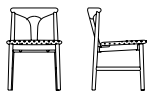
Chairs inspired by Japanese cabinet-making. The backrest with organic lines rests delicately on the structure, like a dragonfly 'Tonbo' in Japanese.

Von der japanischen Schreinerkunst inspirierte Sitzmöbel. Die Rückenlehne mit organischen Linien stützt sich zart wie eine Libelle – auf Japanisch Tonbo – auf die Struktur.

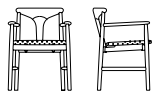
Sièges s'inspirant de l'ébénisterie japonaise. Le dossier aux lignes organiques se pose délicatement sur la structure, comme le ferait une libellule – qui se dit Tonbo en japonais.

KRISTALIA

Dimensions



Chair
L 45,5 P 52,5 H 78 cm
W 17^{7/8}" D 20^{5/8}" H 30^{5/8}"



Armchair
L 58 P 52,5 H 78 cm
W 22^{7/8}" D 20^{5/8}" H 30^{5/8}"

Wood base



Ash effect



European oak stained ash



Walnut stained ash



Black stained ash



Ruby red stained ash

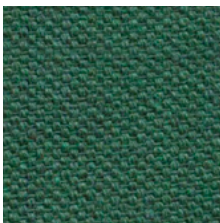


Olive green stained ash



London grey stained ash

Finish of cover



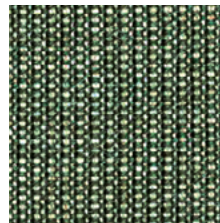
Alveo fabric
12 colours



Biacco fabric
6 colours



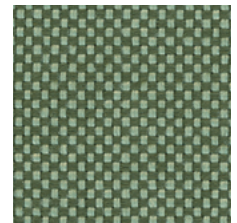
Borgo fabric
9 colours



Canvas 2 (Kvadrat) fabric
45 colours



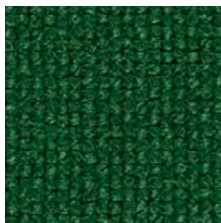
Divina Melange 3 (Kvadrat) fabric
38 colours



Field 2 (Kvadrat) fabric
30 colours



Greto fabric
5 colours



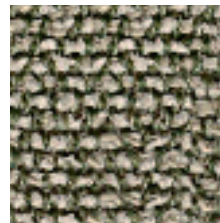
Hallingdal 65 (Kvadrat) fabric
58 colours



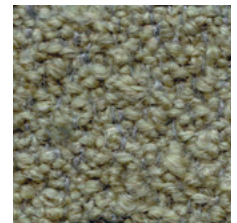
Hero 2 (Kvadrat) fabric
33 colours



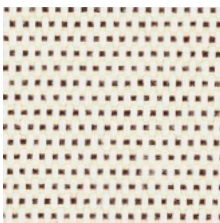
Merit (Maharam) fabric
43 colours



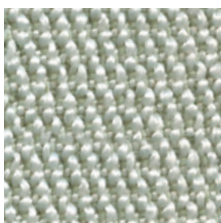
Moss (Sahco) fabric
22 colours



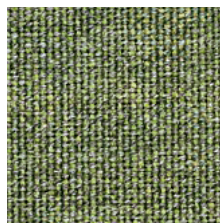
Orsetto (ONE Mario Sirtori) fabric
6 colours



Patio (Kvadrat) fabric
24 colours



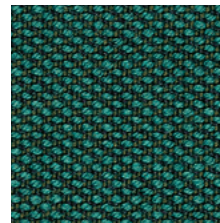
RePo 3D
16 colours



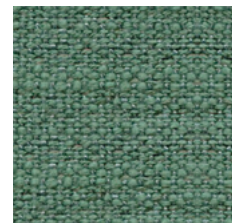
Remix 3 (Kvadrat) fabric
72 colours



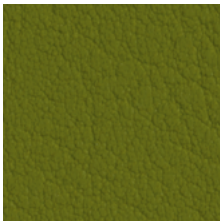
Scuba (Maharam) fabric
15 colours



Steelcut Trio 3 (Kvadrat) fabric
54 colours



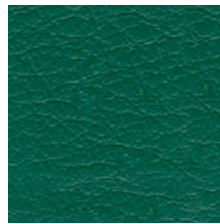
Stipa fabric
10 colours



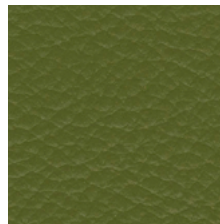
Valencia (Spradling synthetic leather)
66 colours



Vello fabric
13 colours



Elmosoft IX (Elmo) semi-aniline leather
70 colours



Neocoast (Elmo) pigmented & printed leather
20 colours

More finishes and coverings info:

[Materials & Finishes](#)