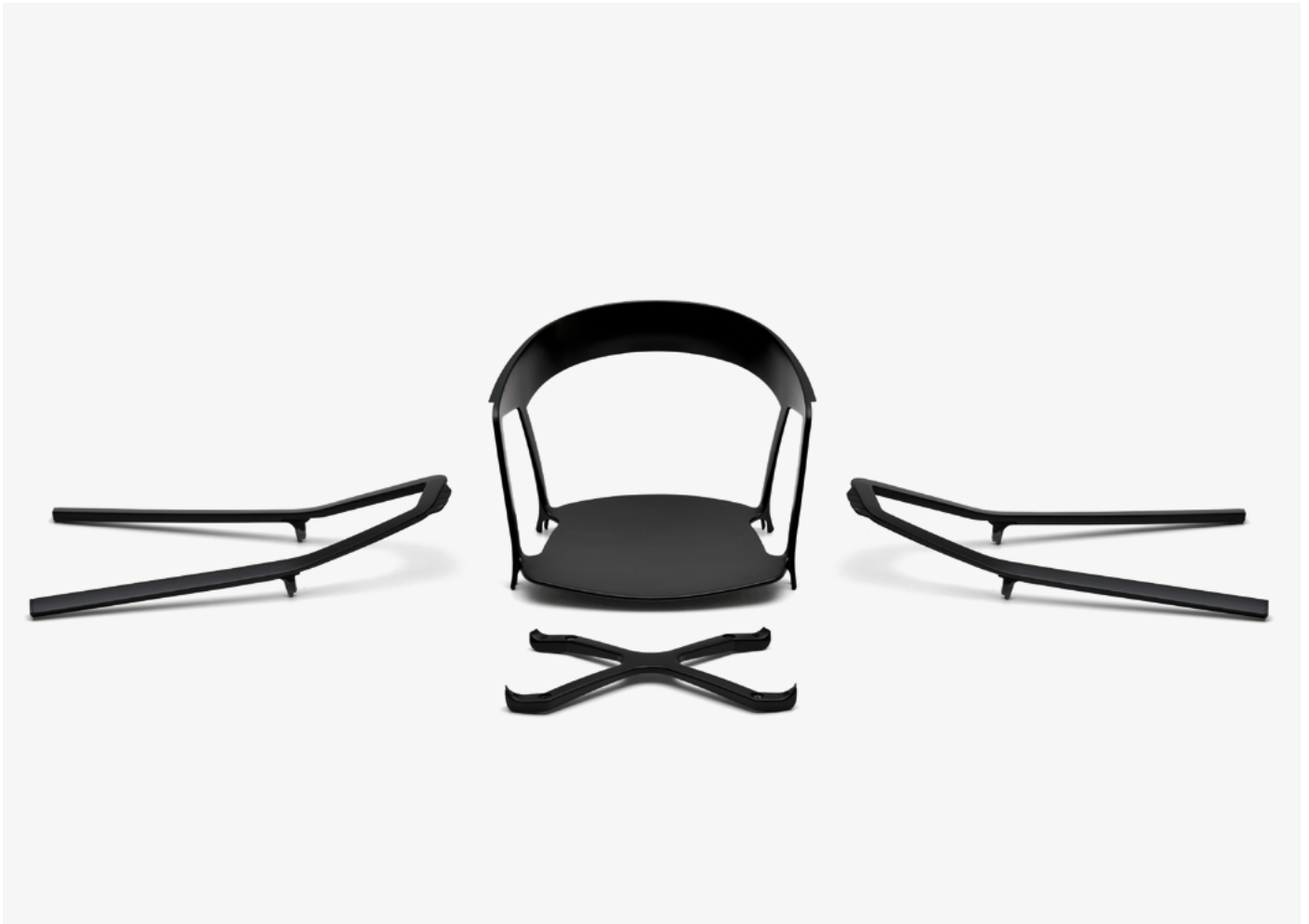


Compas

Patrick Norguet, 2012



Armchair

Elegante e contemporanea. Le particolari gambe, caratterizzate dall'inclinazione a V rovesciata, ricordano le asticelle di un compasso.

Elegant and contemporary. Its unique legs, featuring an inverted sloping V-shape are reminiscent of the rods of a compass.

Elegant und zeitgenössisch. Die besonderen Beine mit der auffallenden Form eines umgedrehten V erinnern an die Schenkel eines Zirkels.

Élégante et contemporaine. Les pieds particuliers, se distinguant par leur inclinaison formant un V inversé, rappellent les bras d'un compas.

KRISTALIA

Dimensions



Stackable armchair
L 55 P 56 H 77 cm
W 21^{5⁄8}" D 22" H 30^{3⁄8}"



With Compas cushion
L 55 P 56 H 77 cm
W 21^{5⁄8}" D 22" H 30^{3⁄8}"



Compas frontal
removable cushion

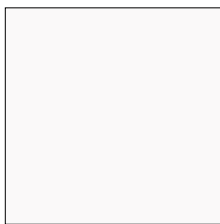


Lips—R/S
Removable cushions

Accessories

Compas removable cushion
Lips removable cushions
Casper protective cover

Metal base (indoor)



White



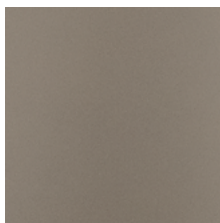
Light grey



Black



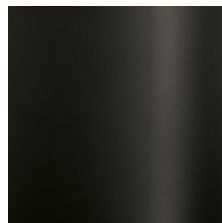
Beige



Exclusive Champagne



Exclusive Brown

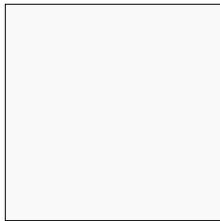


Exclusive Onyx Black



Exclusive Space Gray

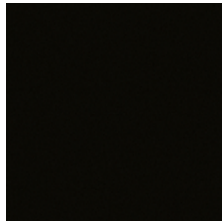
Metal base (outdoor)



White



Light grey

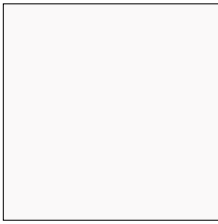


Black



Beige

Body (indoor/outdoor)



White



Light grey

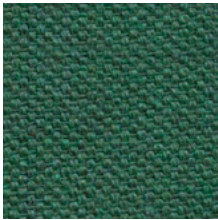


Black



Beige

Compas cushion (indoor)



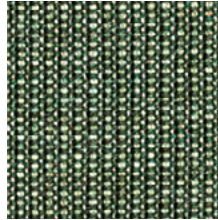
Alveo fabric
12 colours



Biacco fabric
6 colours



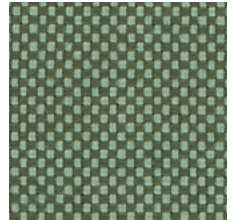
Borgo fabric
9 colours



Canvas 2 (Kvadrat) fabric
45 colours



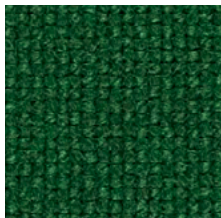
Divina Melange 3 (Kvadrat) fabric
38 colours



Field 2 (Kvadrat) fabric
30 colours



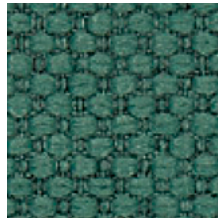
Greto fabric
5 colours



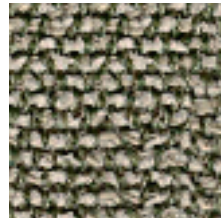
Hallingdal 65 (Kvadrat) fabric
58 colours



Hero 2 (Kvadrat) fabric
33 colours



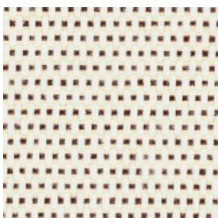
Merit (Maharam) fabric
43 colours



Moss (Sahco) fabric
22 colours



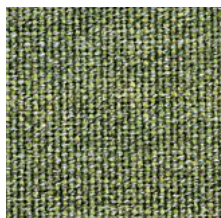
Orsetto (ONE Mario Sirtori) fabric
6 colours



Patio (Kvadrat) fabric
24 colours



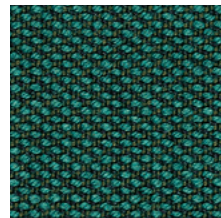
RePo 3D
16 colours



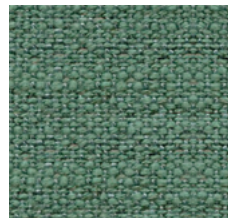
Remix 3 (Kvadrat) fabric
72 colours



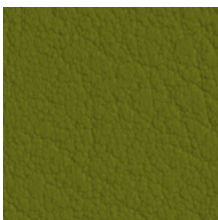
Scuba (Maharam) fabric
15 colours



Steelcut Trio 3 (Kvadrat) fabric
54 colours



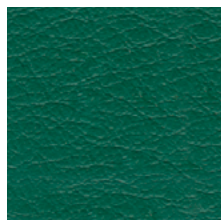
Stipa fabric
10 colours



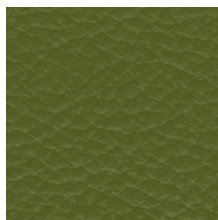
Valencia (Spradling synthetic leather)
66 colours



Vello fabric
13 colours



Elmosoft IX (Elmo) semi-aniline leather
70 colours



Neocoast (Elmo) pigmented & printed leather
20 colours

More finishes and coverings info:

[Materials & Finishes](#)