

1085 Edition

Bartoli Design, 2015



Chair / Lounge armchair

Il fascino del pezzo unico, sintesi di cultura e saper fare. Il rinomato Cuoio Presot è conciato al vegetale con metodo tradizionale, il meccanismo dei tiranti è ispirato alla nautica.

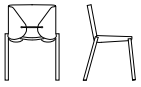
The charm of a unique piece of furniture, the outcome of culture and know-how. Renowned Presot leather is vegetable-tanned using the traditional method. The tie-rod mechanism is nautical-inspired.

Der Zauber des Einzelstücks, eine gelungene Mischung aus Kultur und Können. Das namhafte Leder Presot wird nach einem traditionellen Verfahren pflanzlich gegerbt, der Mechanismus der Zuganker inspiriert sich an der Nautik.

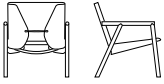
Le charme d'une pièce unique, alliance de culture et de savoir-faire. Le réputé Cuir Presot est un cuir à tannage végétal selon une méthode traditionnelle alors que le mécanisme à haubans s'inspire du monde nautique.

KRISTALIA

Dimensions



Chair
L 52 P 52 H 78 cm
W 20^{4/8"} D 20^{4/8"} H 30^{6/8"}



Lounge armchair
L 66 P 68 H 76 cm
W 26" D 26^{6/8"} H 29^{7/8"}

Wood base



European oak effect



Walnut stained oak effect

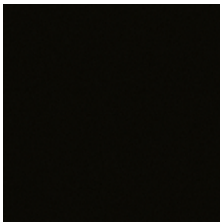


Black oak effect



Ruby red stained ash

Metal finish



Black lacquered steel

Tie-rod device finish



Stainless steel

Body extra thick full-grain hide (Presot)



Natural



Gunmetal



Cognac



Black



More finishes and coverings info:

[Materials & Finishes](#)