

# Sharky

Neuland, 2014



## Chair / Stool

Sinuosa, sottile e resistentissima. Per realizzare le giunture tra la scocca e la base i designer si sono ispirati alle pinne degli squali.

Sinuous, slender and very hard-wearing. To make the joints between the structure and the base, the designers were inspired by shark fins.

Kurvig, dünn und äußerst widerstandsfähig. Bei der Realisierung der Verbindungselemente zwischen dem Aufbau und dem Untergestell ließen sich die Designer von Haifischflossen inspirieren.

Sinueuse, fine et très résistante. Pour réaliser l'union entre la coque et les pieds, les designers se sont inspirés des nageoires des requins.

# KRISTALIA

## Dimensions



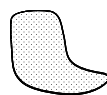
**Wooden base**  
L 45 P 54 H 81 cm  
W 17<sup>5/8</sup>" D 21<sup>2/8</sup>" H 31<sup>7/8</sup>"



**Stool with low back - wooden base**  
L 46 P 54 H 82-92 cm  
W 18<sup>1/8</sup>" D 21<sup>2/8</sup>" H 32<sup>2/8</sup>-36<sup>2/8</sup>"



Polyurethane seat



Front upholstered



**Aluminium base**  
L 45 P 54 H 81 cm  
W 17<sup>5/8</sup>" D 21<sup>2/8</sup>" H 31<sup>7/8</sup>"



**Stool with low back - aluminium base**  
L 45 P 53 H 82-92 cm  
W 17<sup>5/8</sup>" D 20<sup>7/8</sup>" H 32<sup>2/8</sup>-36<sup>2/8</sup>"



Polyurethane seat



Front upholstered



**Stool with high back - wooden base**  
L 49 P 58 H 101-111 cm  
W 19<sup>2/8</sup>" D 22<sup>7/8</sup>" H 39<sup>5/8</sup>-43<sup>5/8</sup>"



**Sharky cushion**  
Removable cushions



**Stool with high back - aluminium base**  
L 49 P 58 H 101-111 cm  
W 19<sup>2/8</sup>" D 22<sup>7/8</sup>" H 39<sup>5/8</sup>-43<sup>5/8</sup>"

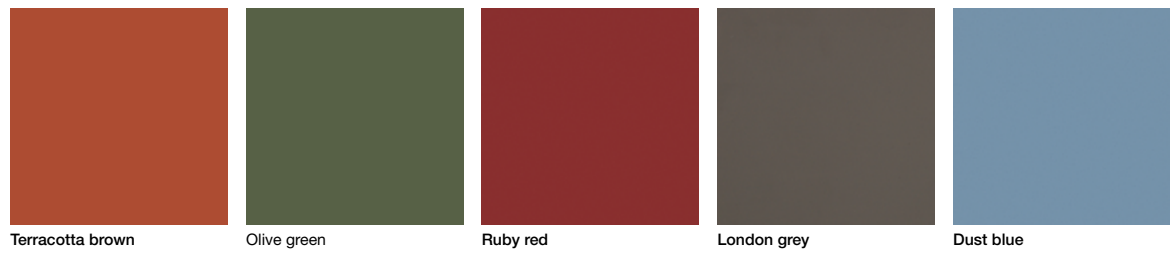


**Lips-R**  
Removable cushions

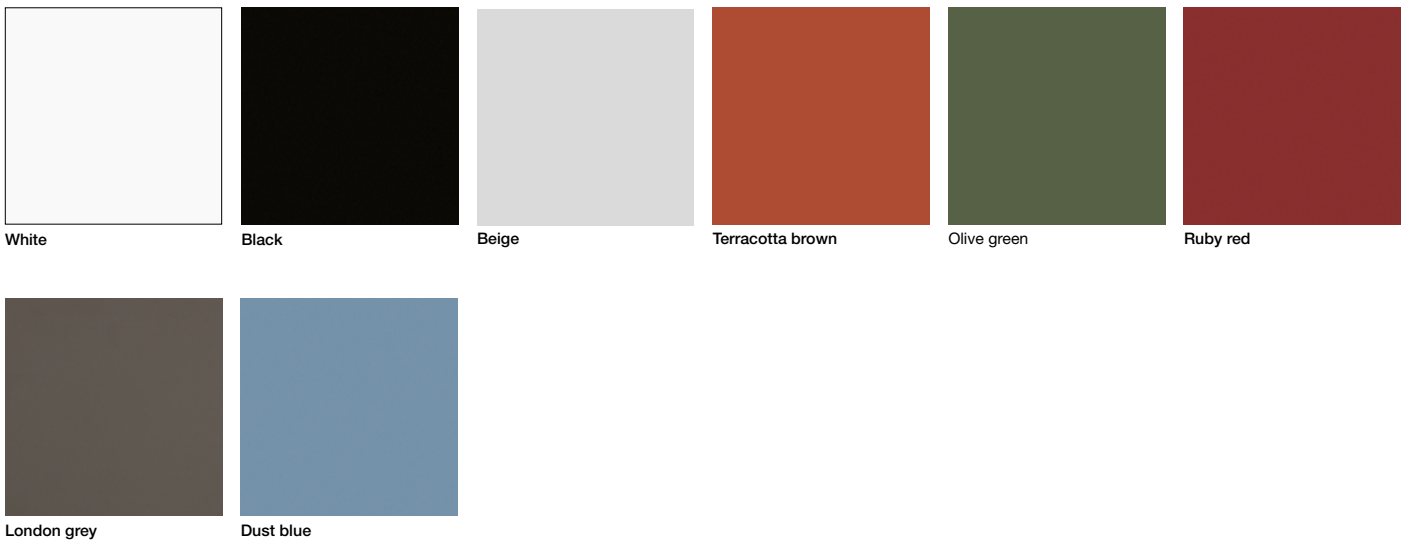
## Accessories

- Sharky removable cushion
- Lips removable cushions
- Water drainage hole
- Casper protective cover
- Set of felt feet

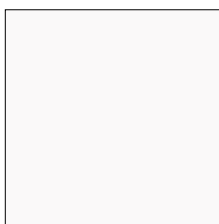
Wood base (indoor)



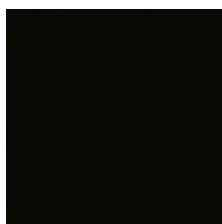
Metal base (indoor/outdoor)



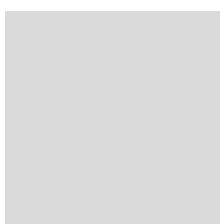
Polyurethane body (indoor/outdoor)



White



Black



Beige



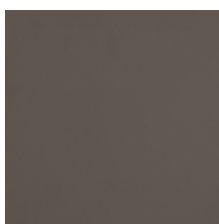
Terracotta brown



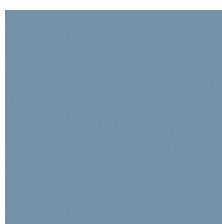
Olive green



Ruby red

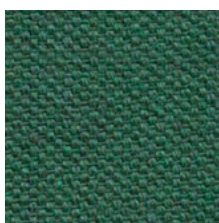


London grey



Dust blue

Front upholstery (indoor)



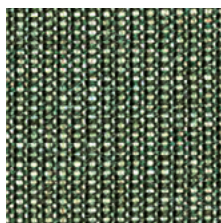
Alveo fabric  
12 colours



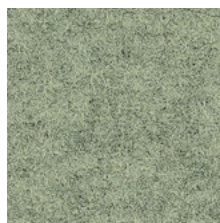
Biacco fabric  
6 colours



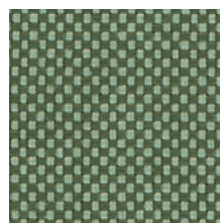
Borgo fabric  
9 colours



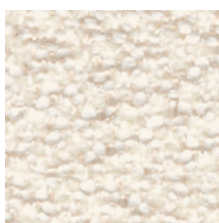
Canvas 2 (Kvadrat) fabric  
45 colours



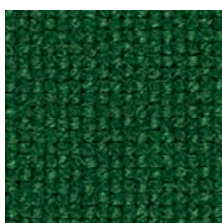
Divina Melange 3 (Kvadrat) fabric  
38 colours



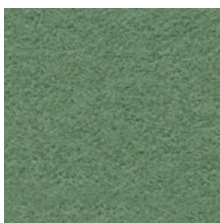
Field 2 (Kvadrat) fabric  
30 colours



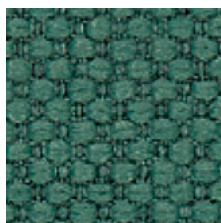
Greto fabric  
5 colours



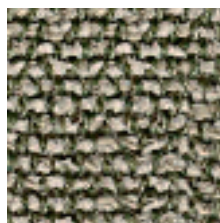
Hallingdal 65 (Kvadrat) fabric  
58 colours



Hero 2 (Kvadrat) fabric  
33 colours



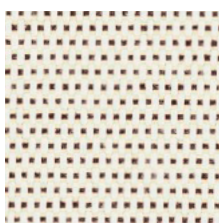
Merit (Maharam) fabric  
43 colours



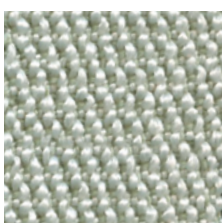
Moss (Sahco) fabric  
22 colours



Orsetto (ONE Mario Sirtori) fabric  
6 colours



Patio (Kvadrat) fabric  
24 colours



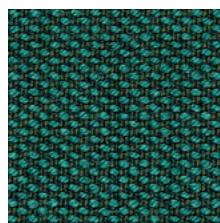
RePo 3D  
16 colours



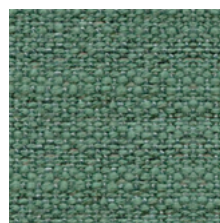
Remix 3 (Kvadrat) fabric  
72 colours



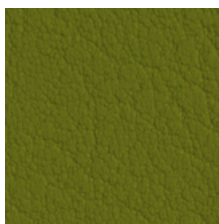
Scuba (Maharam) fabric  
15 colours



Steelcut Trio 3 (Kvadrat) fabric  
54 colours



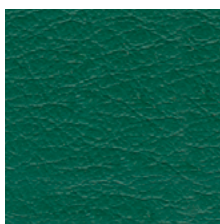
Stipa fabric  
10 colours



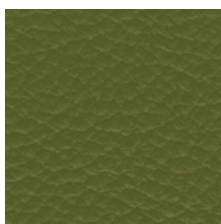
Valencia (Spradling synthetic leather)  
66 colours



Vello fabric  
13 colours



Elmosoft IX (Elmo) semi-aniline leather  
70 colours



Neocoast (Elmo) pigmented & printed leather  
20 colours

More finishes and coverings info:

[Materials & Finishes](#)